

Alibaba.com Gold Plus Supplier

Main Product Lines Verification Report

Presented to

Yantai Yogy Precision Metal Products Co., Ltd.

烟台耀捷金属制品有限公司

Company Address	No. 18, Hongkong Road, Economic and Technological Development Zone, Yantai City, Shandong Province, China
Consigner of Assessment:	Alibaba
Gold Supplier Member ID:	ytyaojie
Gold Supplier Company Name:	Yantai Yogy Precision Metal Products Co., Ltd.
Contact Person:	Mr. Fei Liu
Phone Number:	0086-535-8719856
Fax Number:	0086-535-8719850
Email:	sale@yogymetal.com
Website Address (URL):	http://yogy.en.alibaba.com

Service Provided by SGS
Report No.: 18164569_P+T





Contents

Section 1: Machining Parts, Sheet Metal Fabrication Parts	5
1.1 The Competitive Advantage of Product Line.....	5
1.2 Product Line Description.....	5
1.3 Production Capacity	5
1.4 Production Machinery.....	5
1.5 Testing Machinery (N/A)	6
1.6 Production Flow	7
1.7 Export Market Distribution (Previous Year).....	7
1.8 Order Capacity	8
1.9 Certification (N/A).....	8
1.10 Testing Report (N/A).....	8

Report No:	18164569_P+T	Report Date:	28/Aug./2018	Assessed By	Terry Yu
<i>CONFIDENTIAL</i>		All Rights Reserved		Page No:	2 of 8



Report Number:	18164569_P+T	Assessment Type:	Main Product Lines Verification
Date of Assessment:	28/Aug./2018	Report Date:	28/Aug./2018
Assessor's Name:	Terry Yu	Validity Period:	29/Aug./2018 -- 28/Aug./2019
Reviewed By:	Sam Wang	Online Verification:	www.sgs.com/ecv

Important Notes:

SGS's Disclaimer:

This report reflects our findings for the particularly concerned company on the date of our service only. This report does not discharge or release the factory/sellers/suppliers from their commercial, legal or contractual obligations with buyers in respect of products provided by the factory/sellers/suppliers. Any reader other than the party for whom this report has been specifically issued is hereby informed that the general conditions of service of SGS contain liability limitation provisions.

Alibaba.com's Disclaimer:

This report has been independently prepared by a third party verification agency. The report is provided on an "AS IS" and "AS AVAILABLE" basis. The information contained in the report may change without notice and no obligation is assumed to update the information after publication. Alibaba (including its affiliates) is not involved in the preparation of the report. Publishing of the report by no means means that Alibaba endorses or recommends the report. Therefore, Alibaba cannot be held responsible for any inaccuracy or omission in the report.

To the maximum extent permitted by law, Alibaba expressly disclaims any warranty, expressed or implied, in regard to the report, including any implied warranty of merchantability, fitness for a particular purpose or non-infringement. Your use of or reliance on this report will be at your own discretion and risk. To the maximum extent permitted by law, in no event shall Alibaba be liable for any party for any direct, indirect, punitive, incidental, special or consequential damage costs, expenses, legal fees or losses or any damages whatsoever arising out of or in any way connected with any use of the report even if advised of the possibility of such damages.

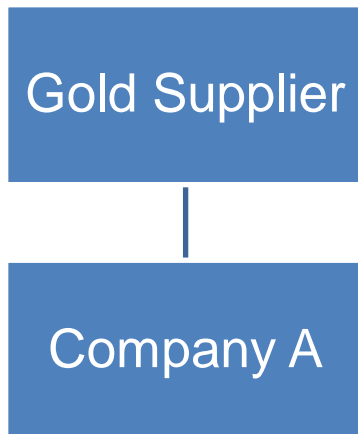


Declaration:

All the information below in this report may cover both the Gold Supplier and its Related Company, except the export records, which only belong to the Gold Supplier. Their relationship has been affirmed according to laws and regulations in China, also it will be clearly displayed below.

Does the gold supplier have a related company?	<input checked="" type="checkbox"/> Yes <input type="checkbox"/> No
If has, Please list the related company name:(abbrev.company A)	Yantai Kaida Metal Products Co., Ltd.
Company A's Address:	No. 18, Hongkong Road, Economic and Technological Development Zone, Yantai City, Shandong Province, China
Relationship with Gold Supplier	<input type="checkbox"/> Wholly Owned <input checked="" type="checkbox"/> Shareholder/Partner <input type="checkbox"/> Cooperation Partner <input type="checkbox"/> Kindred between Owners

Enterprise relationship chart:





Section 1: Machining Parts, Sheet Metal Fabrication Parts

1.1 The Competitive Advantage of Product Line

Most of the workers were with long time experience in cast industry so the quality was stable.

1.2 Product Line Description

Machining Parts, Sheet Metal Fabrication Parts

Product Sample

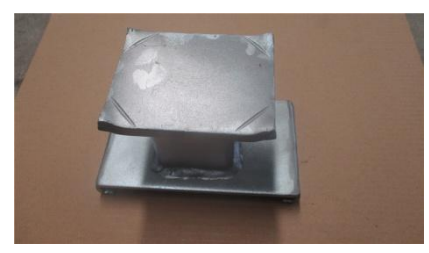
1. Machining Parts



2. Machining Parts



3. Sheet Metal Fabrication Parts



1.3 Production Capacity

Production Line Capacity	Actual Units Produced (Previous 12 months)
Confidential	Confidential
Number of Product Categories	Number of Product Models
3	60

1.4 Production Machinery

Machine Name	Brand & Model No.	Quantity	Number of Year(s) Used	Condition
Laser cutting machine	YAWEI	3	3	Acceptable
Rolling machine	N/A	1	3	Acceptable
Sawing machine	GZ4232	2	3	Acceptable
CNC lathe	CY-K510	4	3	Acceptable
Machining center	N/A	2	3	Acceptable
Automatic welder	N/A	1	3	Acceptable
Plano milling machine	GMC	1	3	Acceptable
Punching machine	N/A	4	3	Acceptable
Cutting machine	QC12Y	3	3	Acceptable
Bending machine	YAWEI	1	3	Acceptable
Radial drilling machine	N/A	2	3	Acceptable
Shot blasting machine	N/A	2	3	Acceptable



Laser cutting machine 	Rolling machine 	Sawing machine 		
CNC lathe 	Machining center 	Automatic welder 		
Plano milling machine 	Punching machine 	Cutting machine 		
Bending machine 	Radial drilling machine 	Shot blasting machine 		
1.5 Testing Machinery (N/A)				
Machine Name	Brand & Model No.	Quantity	Number of Year(s) Used	Condition
N/A	N/A	N/A	N/A	N/A
N/A	N/A	N/A	N/A	N/A
N/A	N/A	N/A	N/A	N/A



1.6 Production Flow					
No.	Production Process	No.	Production Process	No.	Production Process
1	 Raw materials	2	 Cutting	3	 Leveling
4	 Bending	5	 Punching	6	 Machining
7	 Welding	8	 Shot blasting	9	 Painting

1.7 Export Market Distribution (Previous Year)		
Market	Revenue (USD)	Total Revenue (%)
North America	Confidential	88
South America	0	0
Eastern Europe	0	0
Southeast Asia	Confidential	1
Africa	Confidential	2
Oceania	Confidential	2
Mid East	Confidential	1
Eastern Asia	Confidential	2
Western Europe	Confidential	2
Central America	0	0
Northern Europe	Confidential	1
Southern Europe	Confidential	1
South Asia	0	0
Domestic Market	0	0



1.8 Order Capacity		
1.8.1 Real Case for Lower MOQ		
Products Name	#MOQ (In the last 12 months)	
Machining Parts	100 pcs	
1.8.2 Real Case for Large Contract		
Products Name	#Order (In the last 12 months)	
Machining Parts	5,000 pcs	
1.8.3 Shortest Lead Time		
Products Name	#Order (In the last 12 months)	Shortest Lead Time (In the last 12 months)
Machining Parts	100 pcs	15 days
1.9 Certification (N/A)		
Certification Name	N/A	Certificate Picture N/A
Certified By	N/A	
Certificate No.	N/A	
Product Name & Model No.	N/A	
Available Date-Expired Date	N/A	
1.10 Testing Report (N/A)		
Report Name	N/A	Report Picture N/A
Issued By	N/A	
Product Name & Model No.	N/A	
Report Date	N/A	

-- End of Report --